

Leading Edge and Strut Repair

Hold up! Not all l.e. and strut damage can be successfully repaired with glue and tape. If the damage involves zippers, attachment points, or rips near the canopy you may cause more problems trying the DIY method. The Seam Grip is meant to provide a permanent repair and if not used correctly can severely damage your kite. Overly complicated repairs are best left to the experts at your nearest AIRTIME kite facility.

This repair kit is meant for the person that isn't worried about resale value or finds themselves in the middle of nowhere with no access to professional repairs.

1 -LE and strut repair

Pull a portion of the bladder out the rip in the l.e. or strut sleeve and examine it (pic 1). If the bladder has visible damage you can avoid having to pull the bladder later by fixing it now. Use the "glueless patch kit" and included instructions for performing the bladder repair.



2 -LE and strut repair

Next, clean the damaged area with alcohol swabs to remove sand and salt. Make sure the alcohol completely dries before continuing.

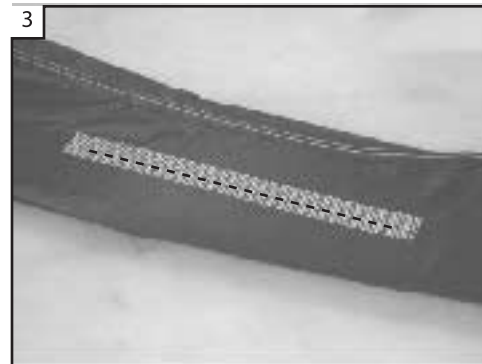
3 -LE and strut repair

Close the tear using Dacron repair tape applied from the inside of the bladder sleeve. This is very difficult unless you can reach in through a zippered access opening. One option is to slit the backing paper lengthwise on the Dacron tape so that you can remove the backing after the tape is inside the sleeve (pic 2).



4 -LE and strut repair

After the tear has been closed with Dacron tape, lay the Drywall tape over the entire tear extending it about an inch past the ends of the rip (pic 3).



5 -LE and strut repair

Lay a bead of Seam Grip glue down the center of the Drywall tape (pic 4).



6 -LE and strut repair

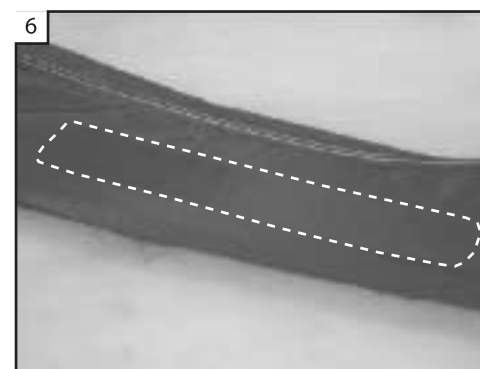
Use the plastic business card to spread the Seam Grip glue over the Drywall tape. You want a thin layer that wets all of the Drywall tape without spilling off the edges (pic 5).



If you want the repair to look better we suggest masking off the area you want glued with the masking tape. However, you'll need to remove the masking tape immediately after applying the Seam Grip glue.

7 -LE and strut repair

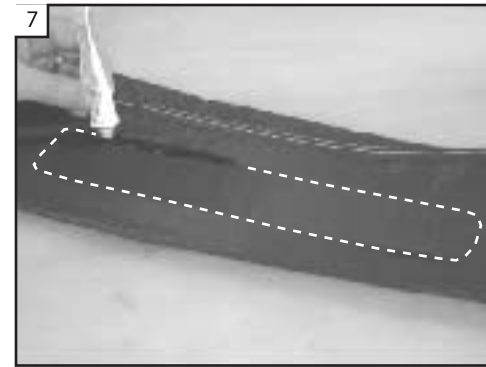
Cut a length of the 2" Dacron tape that will cover the entire repaired area. It should cover all of the Drywall tape and Seam Grip. Lay this over the area and press it down firmly. This step can be done before the glue has dried (pic 6).



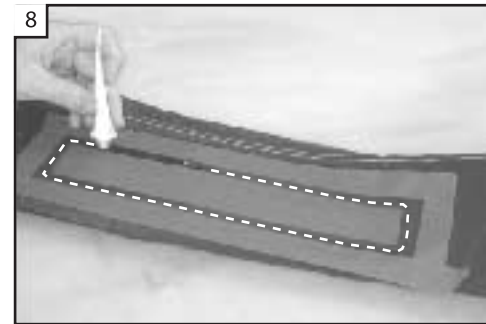
8 -LE and strut repair

To keep the Dacron tape from lifting at the edges it is necessary to smear a thin layer of Seam Grip over the edge of the Dacron tape. This can be done by simply running the glue nozzle around the edge of the tape (pic 7).

If you have the time and would like to make your repair more attractive then you may want to mask off the area you'll be gluing. This can be



done by laying Masking tape 1/4" outside of the Dacron tape all the way around. Also lay Masking tape on top of the Dacron tape 1/4" inside the edge. Once everything is masked off you can smear the Seam Grip over your 1/2" gap in the tape (pic 8). You want to immediately remove the masking tape and let the entire patch dry for 12hrs or until it is no longer tacky.



Professional repair or DIY repair

If you want a permanent repair with factory fabrics and a repair guarantee send the kite in to the closest AIRTIME kite repair facility. Upload a repair ticket for fast professional service at www.airtimekite.com. Your kite will be professionally repaired in just a few business days and sent back.

If you're not worried about resale value or have a kite that is already at the end of its life you may decide to fly your kite indefinitely with the self repair. If flying a kite with a self repair you'll want to check the repair after every session to make sure it is not about to fail. Do not kite further from shore than you're willing and able to swim should your repair fail.